



Pemberton

Everything a home should be

Pemberton News

Volume 2 | Issue 3 | Fall 2017

Pemberton Group named GTA's top-selling high rise builder.

Welcome to the Fall issue of our e-newsletter. 2017 has been exciting for Pemberton and our growing family of homeowners. We've successfully launched and sold some of the Greater Toronto Area's (GTA) most iconic new communities – from Time and Space in downtown Toronto to YongeParc in Richmond Hill, and GO.2 in Maple to Mills Square in Mississauga.

In fact, year to date, Pemberton has sold the most high rise condominiums of any builder/developer in the GTA! According to the September New Homes Monthly Market Report by Altus Group – an independent research firm, Pemberton has sold 2,682 homes since January.

The year has flown by and we can hardly believe that it's already time to start thinking about holiday shopping, and spending time with family and friends!

Without a doubt, one of the most vibrant and festive places to be during the holidays is the Eaton Centre, which attracts shoppers and international tourists.

You may find yourself drawn to the area in the coming weeks, so it's a great time for us to announce our latest condo, [Social at Church + Dundas](#).



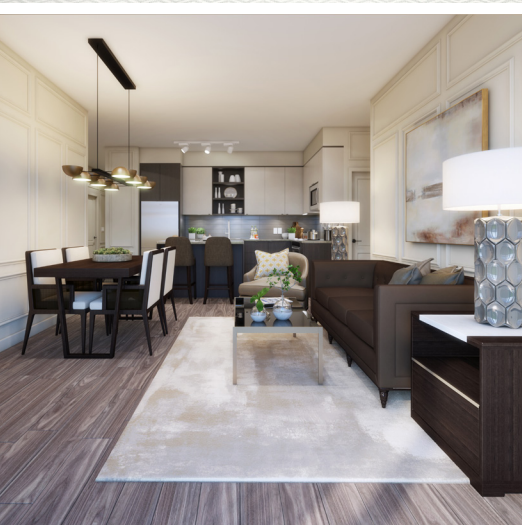
FEATURE STORY

Social – Be part of it

Choosing experiences that shape the way you live and making connections by being linked to everything you need and want creates a fulfilling lifestyle. You'll find a kindred partnership between design, amenities and convenience at Social at Church + Dundas, our newest condominium coming soon to downtown Toronto.

Steps from Yonge-Dundas Square and the Eaton Centre, Social will rise to 52 storeys at Church and Dundas, which boasts a 100/100 transit and bike scores, along with a near-perfect walk score!

Social residents will live steps from Yonge-Dundas Square, Ryerson University, and the multitude of shopping, restaurants, and cafes and entertainment venues in the surrounding area. Surrounded by every neighbourhood amenity you need, Social will offer Pemberton's renowned premium quality interior features and finishes, such as custom-style cabinetry, quartz countertops, 7 ½" laminate flooring, and stainless-steel appliances.



LAST CHANCE AT PRE-CONSTRUCTION PRICES

Act quickly to own one of the spacious homes at GO.2. Situated in the historic Village of Maple at Major Mackenzie and Dufferin, and next to the Maple GO station. From here, it's just a 30-minute commute by GO train to Union Station! Ask about the limited-time-only Feature Suite, the 1,385 sq. ft. two-bed + den Suite D, priced from \$820,000. Buy now and enjoy free parking and locker, choice of extended deposit structures. Other suites from the mid-\$300,000s, and the final townhome is available at \$903,900. See a sales representative for full details.

FINAL OPPORTUNITY TO OWN

Located at Erin Mills Parkway and Erin Centre Boulevard, across from Erin Mills Town Centre, Mills Square residents will enjoy a two-storey onsite Rec Centre, totaling over 17,000 sq. ft. These open-concept layouts also feature Pemberton's renowned high-quality features and finishes including 7 ½"-wide laminate flooring, smooth ceilings, 9-foot ceiling heights in the principal rooms, custom-quality kitchens with extra-tall uppers and a full-size appliance package, and spa-inspired bathrooms. Suites come with a stacked washer and dryer, and a patio or balcony. All features and finishes are as per plan. Final two-bed + den suite remains at \$536,990. By appointment only. Please call 905.326.4100

An Exciting New Year

We wish you and your family all the best during the upcoming holiday season.

We will have lots of exciting news in 2018, including new Pemberton communities in many of the GTA's most desirable locations including downtown Toronto, Mississauga, Richmond Hill, and Stouffville.

Be sure to **Subscribe** online in order to receive up-to-date information on new Pemberton communities coming in 2018!

Thank you for reading our Fall issue!



Pemberton

Everything a home should be

50 Confederation Parkway Concord, Ontario L4K 4T8 Canada
T 905.326.4100 E info@pembertongroup.com W pembertongroup.com



Subscribe to Pemberton

©2017 Pemberton Group. All rights reserved.
[Unsubscribe](#) / [Privacy Policy](#)

Prices and specifications are subject to change without notice. Illustrations are artist concept. E. & O. E. November 2017.